



16A Singleton Street Horningsea Park NSW

4 2 4

Some homes tick boxes.

Others give you that rare feeling that life is about to get easier, more comfortable, and more enjoyable the moment you walk through the door.

Welcome to 16A Singleton Street, Horningsea Park - a beautifully kept family home that delivers the kind of space, practicality and flexibility that so many buyers are searching for, yet so few properties truly offer. Set in one of South-West Sydney's most connected and family-friendly pockets, this is a home designed for real living, where everyday comfort meets exceptional convenience.

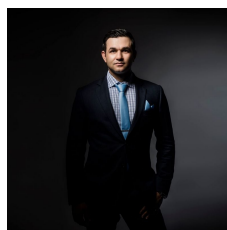
From the street, the timeless appeal of this solid brick

[For full version visit the website](#)

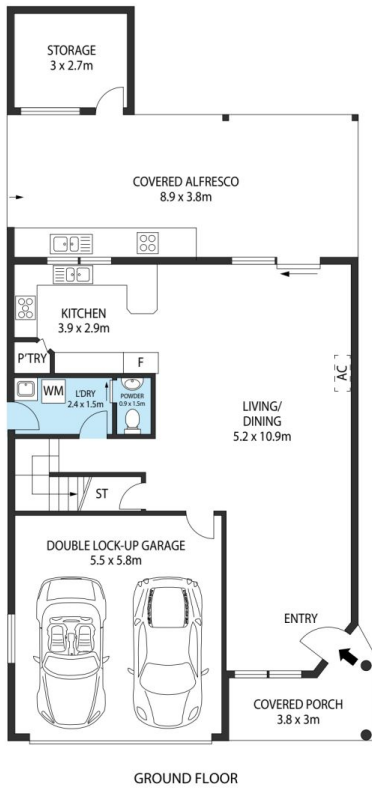
Type : House

Price : \$1,200,000 - \$1,300,000

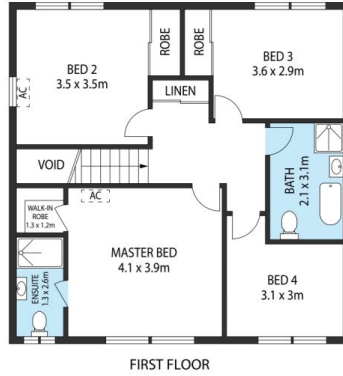
View : <https://www.jt-property.com.au/sale/nsw/liverpool-fairfield/horningsea-park/residential/house/8710698>



Aron (arman) Korani
0472 767 777



GROUND FLOOR



FIRST FLOOR



SITE PLAN

16A Singleton Street, Horningsea Park

TOTAL APPROX. FLOOR AREA 234SQ.M

Whilst every attempt has been made to ensure the accuracy of the floor plan contained here, measurements of doors, windows, rooms and any other items are approximate and no responsibility is taken for any error, omission, or misstatement. This plan is for illustrative purposes only and should be used as such by any prospective purchaser.