



1/895 Pacific Highway Pymble NSW

2 🚗

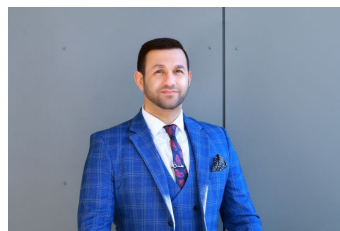
Discover a remarkable office space in one of Pymble's most coveted locations-1/895 Pacific Highway. Located in a contemporary building with an enviable reputation, this is not just a workspace; it's an opportunity to position your business in a prime location, where style meets practicality.

Boasting a generous 79sqm total area, with 46sqm of internal space, this office has been thoughtfully designed to cater to a range of business needs. The layout includes two separate offices, partitioned with industrial-strength glass to provide both privacy and a sleek, modern aesthetic. These glass partitions allow natural light to flood in, ensuring a vibrant and inspiring environment.

The large common area provides the perfect space for

[For full version visit the website](https://www.jt-property.com.au/sale/nsw/north-shore-upper/pymble/commercial/offices/8274609)

Type : Offices
Price : Just Listed! \$300k + GST
Building Size : 79 sqm
Land Size : 79 sqm
View : <https://www.jt-property.com.au/sale/nsw/north-shore-upper/pymble/commercial/offices/8274609>



Aron (arman) Korani
 0470 767 777