

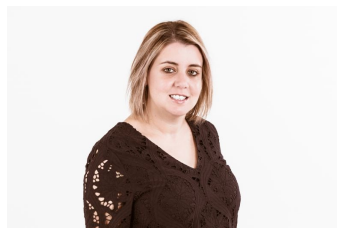


12 Bettington Road Oatlands NSW

- Modern duplex with three generous bedrooms and built-ins
- Large kitchen with stainless steel appliances and gas cooking
- Sun filled lounge room with gas fireplace and air-conditioning, plus separate meals area
- Two family size bathrooms including ensuite to main and 3rd w/c
- Single lock up garage with off street parking plus internal laundry
- Generous rear pergola plus yard area
- Great location - only minutes to local, schools, shops and Transport

3 2 1

View : <https://www.jt-property.com.au/lease/nsw/parramatta/oatlands/residential/semi-detached/7211281>



Vanessa Elias
0434 341 755

Disclaimer: All information contained herein is gathered from sources we believe to be reliable. However, we