

28/927-933 Victoria Road West Ryde NSW

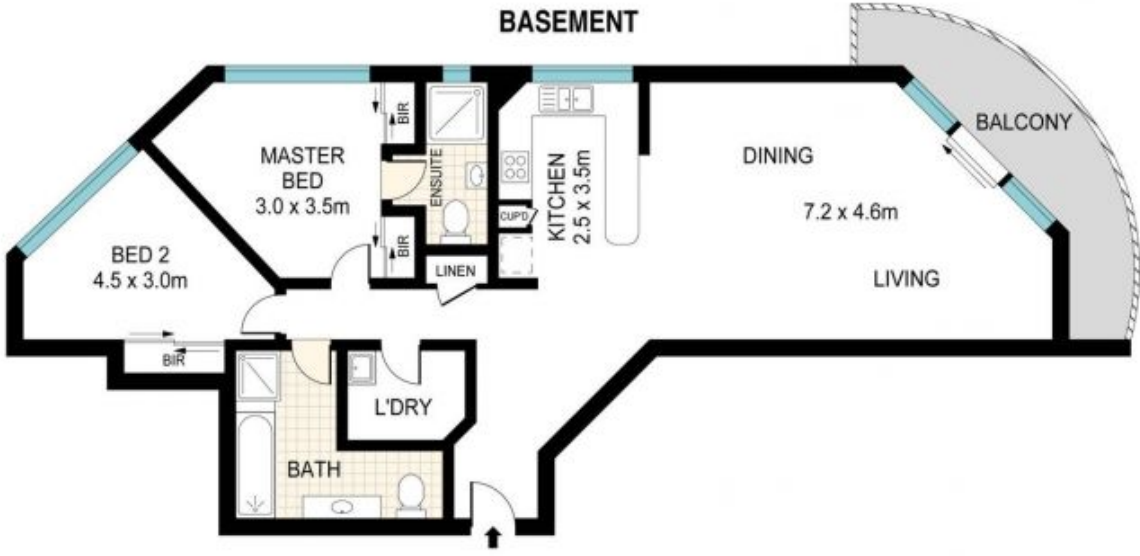
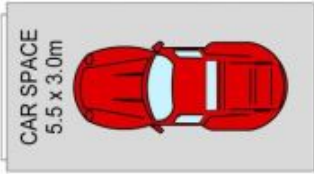
2 2 1

- Security sun-fill and level lift access in a sought after location
- Set right at the back of the block and facing Hermitage Road eliminating any noise from Victoria Road
- Centrally located and close to all the essential amenities IE. West Ryde market place, trains and bus stop right at your front door
- Two double size bedrooms both with built-ins and master with an ensuite
- Combine large living areas flowing out to a good size balcony with district views
- Modern open plan kitchen with gas cooking and stainless appliances
- Modern bathrooms
- Internal laundry plus a lock-up garage

View : <https://www.jt-property.com.au/lease/nsw/northern-suburbs/west-ryde/residential/apartment/6197581>



John Tan
0410 537 138



Scale in metres. Indicative only. Dimensions are approximate. All information contained herein is gathered from sources we believe to be reliable. However we cannot guarantee it's accuracy and interested persons should rely on their own enquiries.

28/927-933 Victoria Road, West Ryde

