

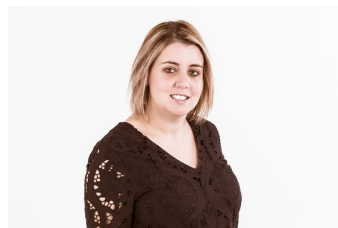


2/16-18 Myrtle Street Rydalmere NSW

2 1 1

- Near new two bedroom apartment with built-ins located in a security block with lift access
- Gourmet gas kitchen with stainless steel appliances and dishwasher
- Large open plan lounge and dining area with air conditioning
- Spacious bathroom with second toilet
- Wrap around courtyard with undercover area plus rear grassed common area
- Single security car space with storage cage
- Convenient location only minutes to local schools, shops and transport

View : <https://www.jt-property.com.au/lease/nsw/parramatta/rydalmere/residential/apartment/6197510>



Vanessa Elias
0434 341 755

Disclaimer: All information contained herein is gathered from sources we believe to be reliable. However, we