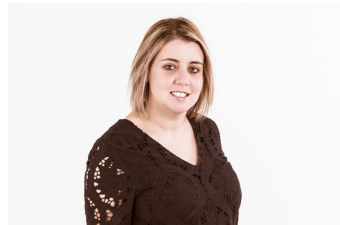


11/6A Ingleby Street Oatlands NSW

2 1 1

- Single level villa situated at the back of a leafy complex
- Two good sized bedrooms with built-ins
- Updated kitchen with ample cupboard space
- Large combined lounge and dining area with floorboards throughout
- Modern bathroom with separate toilet
- Internal laundry plus air conditioning
- Single lock up garage with visitors parking available
- Generous rear yard with a pool in the complex
- Furnishing options available

View : <https://www.jt-property.com.au/lease/nsw/parramatta/oatlands/residential/villa/6197502>



Vanessa Elias
0434 341 755

Disclaimer: All information contained herein is gathered from sources we believe to be reliable. However, we cannot guarantee its accuracy; we do not accept any responsibility for its accuracy and do no more than pass it on. Any interested persons should rely on their own